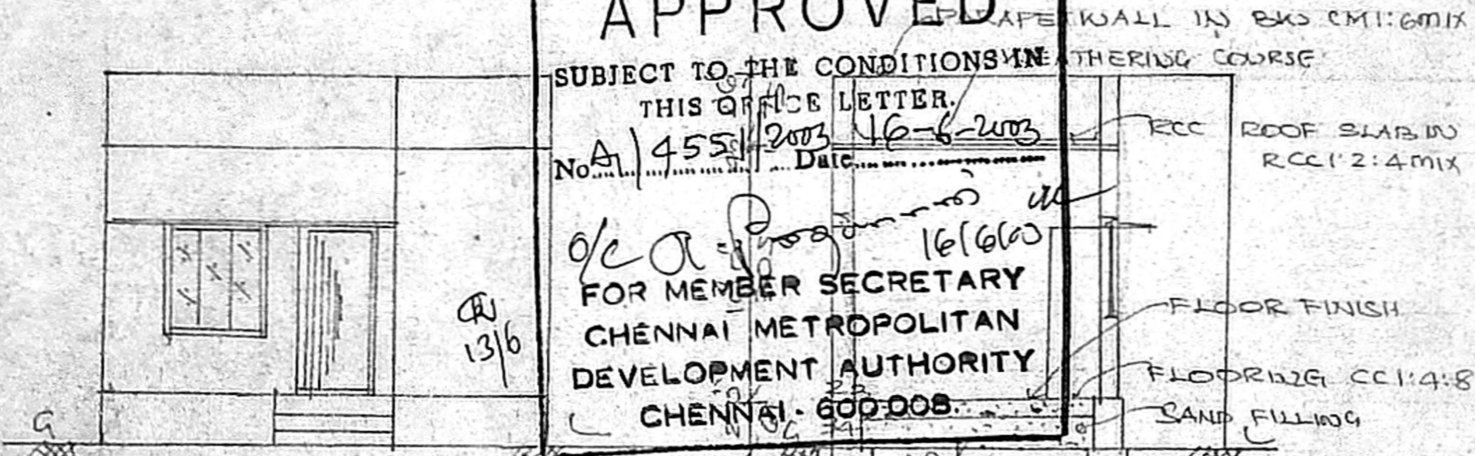
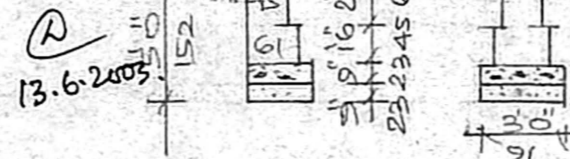


OFFICE COPY

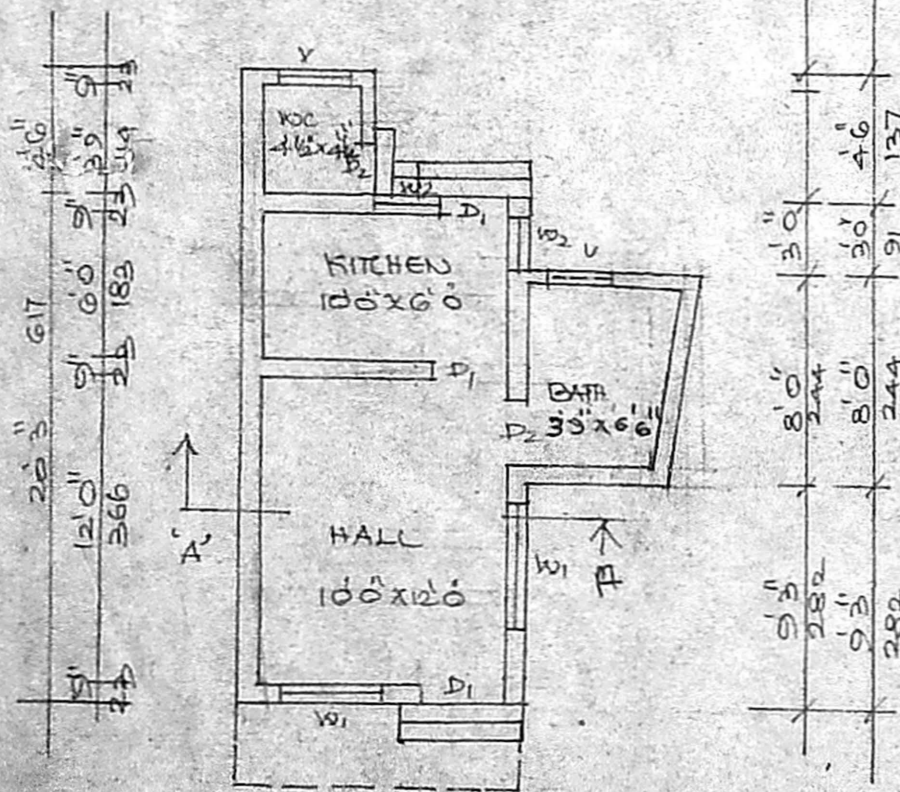
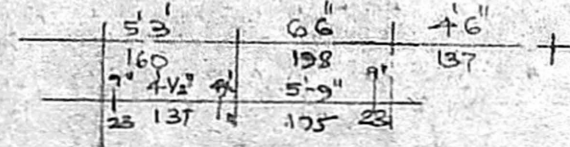
A/002294/167/2003
 Planning Permit No.
APPROVED
 SUBJECT TO THE CONDITIONS IN
 THIS OFFICE LETTER
 No. A/4551/2003/16-6-2003
 Date 16/6/03
 FOR MEMBER SECRETARY
 CHENNAI METROPOLITAN
 DEVELOPMENT AUTHORITY
 CHENNAI - 600 008



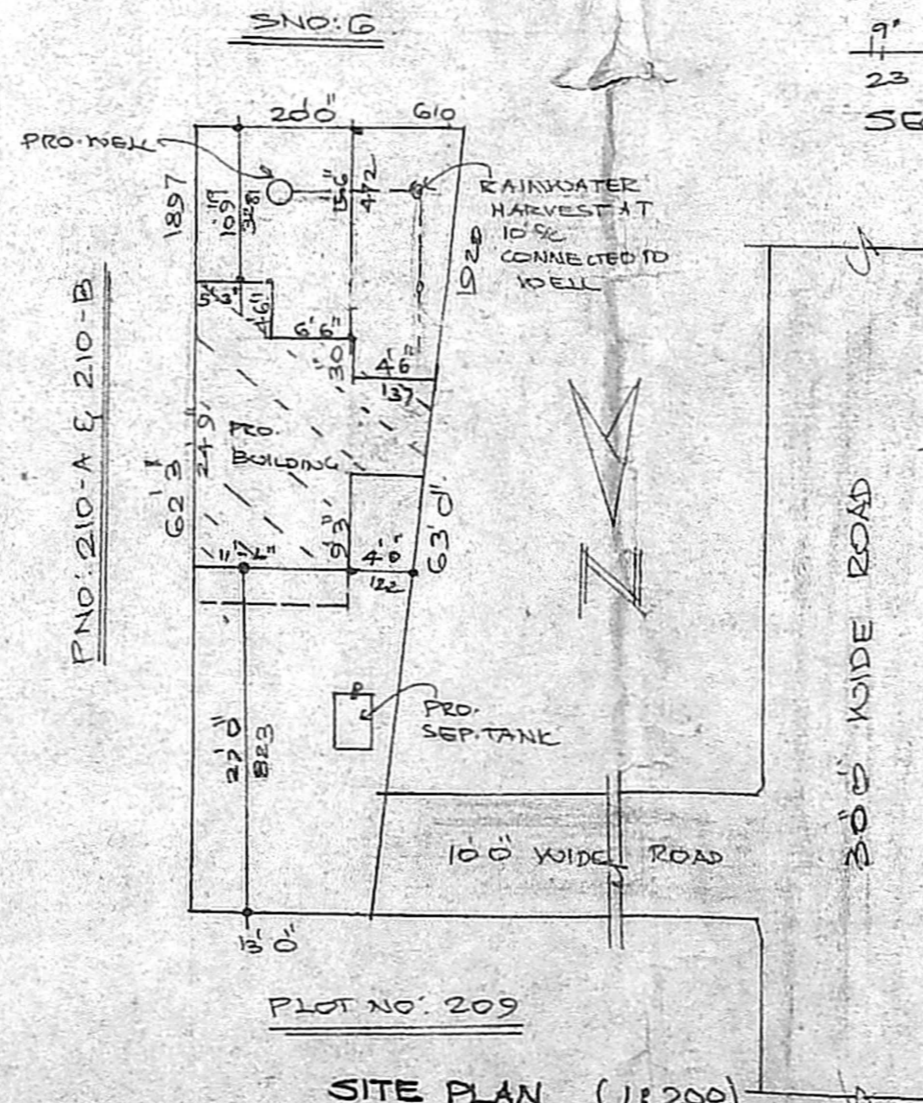
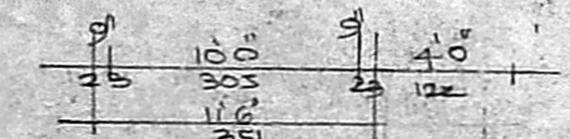
ELEVATION



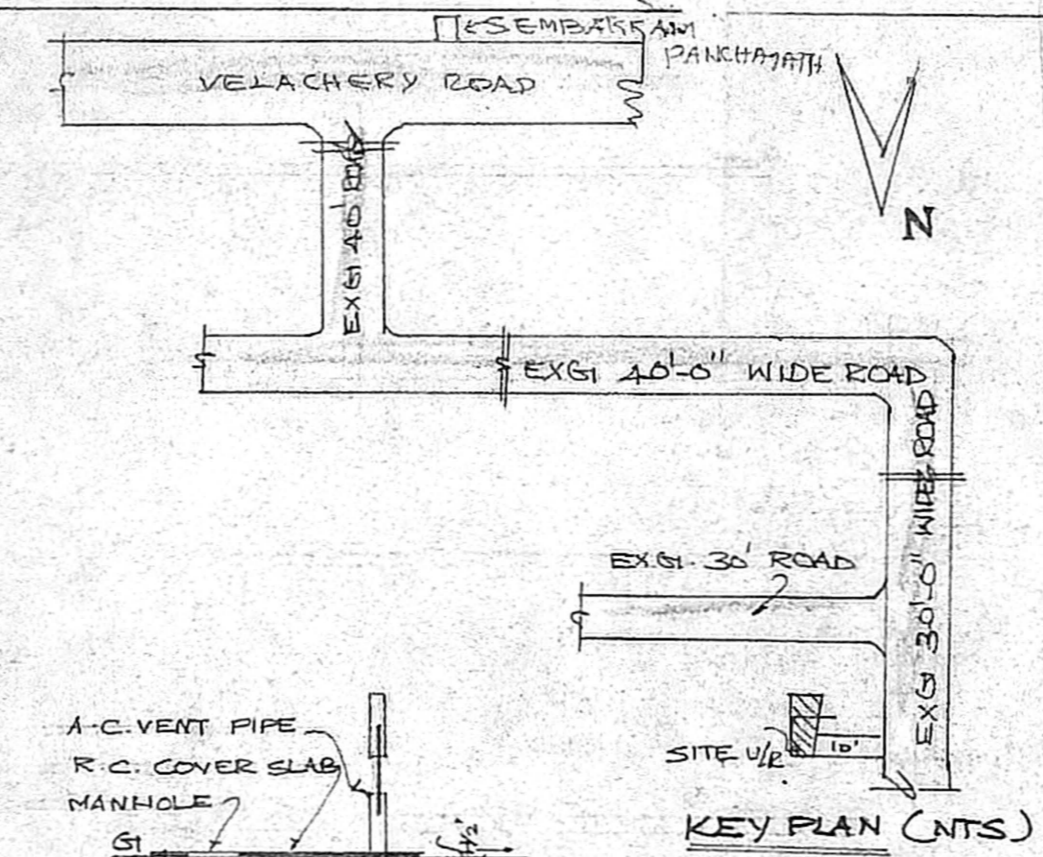
SEC: ON AA



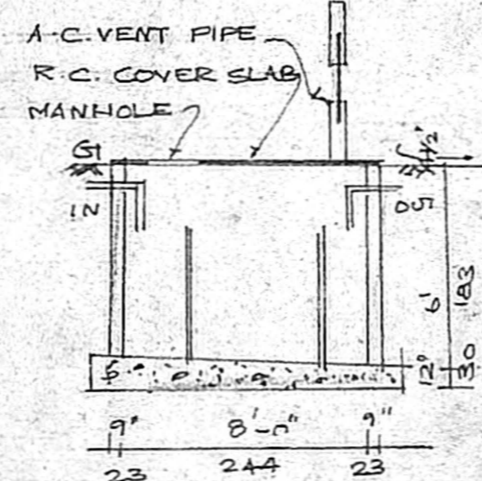
GROUND FLOOR PLAN



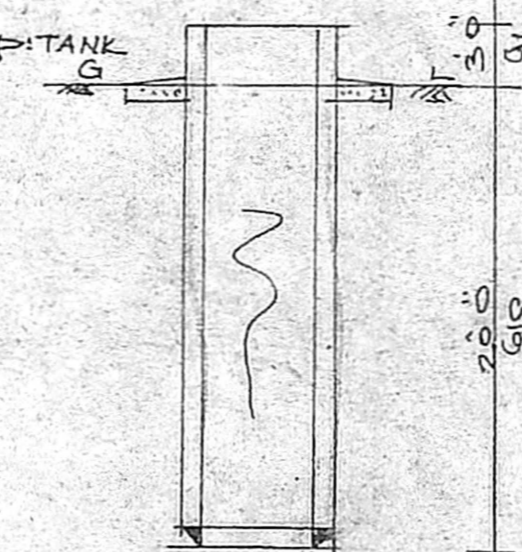
SITE PLAN (1:200)



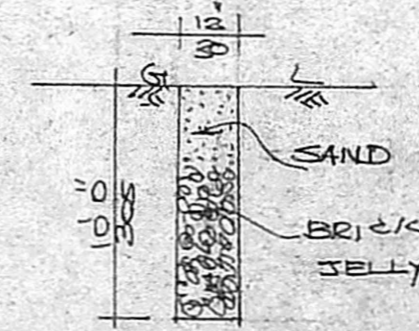
KEY PLAN (NTS)



SEC: OF SEPT. TANK



SEC: OF WELL



RAIN WATER HARVEST

PLAN SHOWING THE PROPOSED
 GROUND FLOOR CONSTRUCTION
 AT PLOT NO: 210-C "THIRUMALAI
 NAGAR" IN S.NO: 6/6A OF
 CMDA "A" CHANNEL
 SEMBAKKAM VILLAGE, SEMBAKKAM
 C. No. A/4551/2003
 TOWN PANCHAYATH LIMITS,
 Scrutiny Plan / Revised Plan
 TAMBARAM TALUK, KANCHI FORAM
 DISTRICT.
 A.P.
 SCALE: 1:100 & 200

JOINERIES :-

DOOR	D1	91 X 213
DOOR	D2	75 X 213
WINDOW	W1	122 X 122
WINDOW	W2	71 X 122
VENT	V	61 X 75

STAIR CASE :-	COLOUR INDEX :-
WIDTH 91 CMS	PROPOSED
RISE 18 CMS	ROAD
TREAD 23 CMS	SITE BOUNDARY

EXTENT IN	SQFT	SQMT
PLOT AREA	1035	96
G-F PLINTH AREA	316	29
OPEN SPACE	719	67
COVERAGE	31%	
F.S.I	0.31	

S. Kosal Kumar DCE
 OWNERS -
 Cell: 98400 27658
 Ph: 2262164 (O) 2264664 (R)
 S. KOSAL KUMAR DCE
 CONSULTING CIVIL ENGINEER
 LICENSED SURVEYOR
 CORPORATION OF CHENNAI
 CLASS - II LICENSE NO. 256
 TAMBARAM MUNICIPALITY
 ALENDUR MUNICIPALITY
 PALLAVAPURAM MUNICIPALITY
 NANDIVARAM - GUDUVANCHERI TOWN
 PANCHAYATH
 OF. NO. 2/12
 OF. NO. 10/1
 OF. NO. 11/1
 OF. NO. 12/1
 OF. NO. 13/1
 OF. NO. 14/1
 OF. NO. 15/1
 OF. NO. 16/1
 OF. NO. 17/1
 OF. NO. 18/1
 OF. NO. 19/1
 OF. NO. 20/1
 OF. NO. 21/1
 OF. NO. 22/1
 OF. NO. 23/1
 OF. NO. 24/1
 OF. NO. 25/1
 OF. NO. 26/1
 OF. NO. 27/1
 OF. NO. 28/1
 OF. NO. 29/1
 OF. NO. 30/1
 OF. NO. 31/1
 OF. NO. 32/1
 OF. NO. 33/1
 OF. NO. 34/1
 OF. NO. 35/1
 OF. NO. 36/1
 OF. NO. 37/1
 OF. NO. 38/1
 OF. NO. 39/1
 OF. NO. 40/1
 OF. NO. 41/1
 OF. NO. 42/1
 OF. NO. 43/1
 OF. NO. 44/1
 OF. NO. 45/1
 OF. NO. 46/1
 OF. NO. 47/1
 OF. NO. 48/1
 OF. NO. 49/1
 OF. NO. 50/1
 OF. NO. 51/1
 OF. NO. 52/1
 OF. NO. 53/1
 OF. NO. 54/1
 OF. NO. 55/1
 OF. NO. 56/1
 OF. NO. 57/1
 OF. NO. 58/1
 OF. NO. 59/1
 OF. NO. 60/1
 OF. NO. 61/1
 OF. NO. 62/1
 OF. NO. 63/1
 OF. NO. 64/1
 OF. NO. 65/1
 OF. NO. 66/1
 OF. NO. 67/1
 OF. NO. 68/1
 OF. NO. 69/1
 OF. NO. 70/1
 OF. NO. 71/1
 OF. NO. 72/1
 OF. NO. 73/1
 OF. NO. 74/1
 OF. NO. 75/1
 OF. NO. 76/1
 OF. NO. 77/1
 OF. NO. 78/1
 OF. NO. 79/1
 OF. NO. 80/1
 OF. NO. 81/1
 OF. NO. 82/1
 OF. NO. 83/1
 OF. NO. 84/1
 OF. NO. 85/1
 OF. NO. 86/1
 OF. NO. 87/1
 OF. NO. 88/1
 OF. NO. 89/1
 OF. NO. 90/1
 OF. NO. 91/1
 OF. NO. 92/1
 OF. NO. 93/1
 OF. NO. 94/1
 OF. NO. 95/1
 OF. NO. 96/1
 OF. NO. 97/1
 OF. NO. 98/1
 OF. NO. 99/1
 OF. NO. 100/1